



# **PUSH-OFF TRAILER**

RAMBODY



AS-23-EN

**Krampe**  
QUALITY ON WHEELS



# #READYFORFUTURE

## ALL KRAMPE VEHICLES WITH EU TYPE APPROVAL

All Krampe trailers have in principle the EU type approval. Thereby the vehicles can be registered in the complete EU.

A consistent quality management is necessary for the EU type approval. It assures that the vehicles meet the highest EU quality and safety standards.

The processes and the production at Krampe are quality-controlled and standardised.

As one of the first manufacturers of transport technology, Krampe has already got the EU type approval by the end of 2021.



## QUALITY ON WHEELS

*We are passionate about making high-quality transport trailers. We understand our customers' need for reliable equipment and do everything we can to meet their expectations. Our products are characterised by quality, durability and reliability. We work in close cooperation with our customers to create effective solutions. Your experiences and your requirements are what motivate us. Our success is based on a foundation of trust and cooperation. We appreciate the relationships we have with our customers and partners, who are always inspiring us to become better. Experience the quality of our products for yourself. The Krampe team is ready to find the right solution for you.*

Thank you for your trust!



Robin Krampe  
– CEO



### REGIONAL & FAMILIAR

We are an owner-managed company for more than 100 years. Robin Krampe is the Managing Director of the company Krampe Fahrzeugbau GmbH in the fourth generation. The company is 100% owned by the family and this is to remain so in the future

Our slogan "Krampe - Quality on Wheels" is lived by us every day. We are committed to Germany as a production site and manufacture at our plant in Coesfeld in the Münsterland region. As a family-run company, we have always had good experiences with our basic idea "what we can manufacture ourselves, we do it ourselves". The huge vertical range of manufacture gives us the reassuring certainty of being

able to supply the highest quality and to control all production steps. We are proud of our employees. Lots of long-term employees have still completed their apprenticeship at Krampe. Regularly, our apprentices receive awards as chamber, regional or federal winners.

We rely on green energy for the production of our mainly red tippers. So district heating of the neighbouring biogas plant is used to heat all offices and production halls. We produce about 150% of our own electricity requirements by means of our in-house photovoltaic system.



# OUR MODELS

PUSH-OFF TRAILER FOR EACH NEED

## QUALITY ON WHEELS

This is our motto and the key to our success. We have been Germany’s uncontested market leader of tractor-pulled body tippers and halfpipes for the agricultural industry for many years. In the course of the years, we have steadily expanded our product range and added further innovative product groups such as the hooklift trailers or the push-off trailer.

## STABLE IN TERMS OF VALUE

Our well-known red tippers are characterised by their outstanding reliability and durability. The high resale value is a clear proof of their quality.

## BEST QUALITY

In the production of our vehicles, we exclusively rely on first-class materials and qualified personnel. With field-tested solutions, a well thought out construction and the continuous development of the products, we are able to offer you vehicles that are unmatched.

## OUR PUSH-OFF TRAILER IS LIKE NO OTHER

The first push-off trailer in proven Krampe quality. The RamBody associates both innovation and robustness and offers an excellent driving comfort.

The RamBody is our response to the increasing demand for a reliable horizontal unloading trailer - both practice-oriented and practicable. Let you be convince of the results of two years of development work and many

## ROBUST AND COMFORTABLE

Our torsion-resistant running gear are made of rectangular tubes and are therefore extremely robust. The closed construction avoids dirt deposits. Large spring centres, high-quality running gear components and smart electronic assistance systems ensure the greatest possible driving comfort.

## INNOVATIONS FROM MÜNSTERLAND

Krampe has shaped the international standards with a lot of innovations. Thanks to the EU type approval, we already satisfy the requirements of tomorrow. We are commited to Germany as a production site and to our origin from the Münsterland region.

## PRODUCED FOR YOU

By us, you get custom-made trailers that are especially tailored to your requirements. Thanks to short paths between construction and production, custom-made products can be planned and realised.

thousand test hours with prototypes. Experience all the advantages resulting from the perfect combination of a new unloading body and one of the best running gear on the market.

The RamBody models complement our range by a further product category which are reliable in use and stable in value in Krampe quality.

# TABLE OF CONTENT

RAMBODY – PUSH-OFF TRAILER

## RAMBODY SERIES

Advantages of the RamBody Series	7
RamBody – Tandem & Tridem	8
You should know that	10

## PRODUCT DETAILS

Running gear/Steering axles	12
Push blade	14
Accessories – Running gear	16
Body	18
Accessories – Body	19
Load securing	20

## TECHNICAL DATA

RamBody	21
---------	----

## FURTHER INFORMATION

Tyres	22
Sales team	23



# ADVANTAGES AT A GLANCE

# THE RAMBODY SERIES

A PUSH-OFF TRAILER LIKE ONLY KRAMPE BUILDS IT

## EFFICIENT AND OPTIMISED

The RamBody push-off trailer are extremely robust and reliable and are characterised by a visually appealing, timeless design. They are made of high-quality steels and are weight-optimised. Due to the folded sidewall sheets, we guarantee optimum rigidity at the same time.

## STABLE

The torsion-resistant chassis made of rectangular tubes have belonged to the best ones on the market for years. In addition to the low empty weight, there are also no obstructive surfaces on which dirt can deposit. All vehicles are equipped with BPW axles; automatic slack adjusters also belong to the standard for a maintenance-friendly and safe operation.

## ROBUST AND DURABLE

Thanks to a seamless construction made of one large format sheet plate each, there are less edges on the lateral sidewalls and floor sheet of the RamBody model where loaded goods can accumulate. The jet design of the body ensure an extremely robust overall construction. A lot of field-tested details according to our motto "quality on wheels" round off the RamBody vehicles and ensure durable and functional trailers with a high resale value.

## OFF-ROAD AND RELIABLE

Thanks to the overhead brake cylinder for our BPW axles, we warrant a high ground clearance guaranteeing use also in challenging terrain. Due to our modular solutions and a high vertical range of manufacture, we can offer a large choice of individual running gear options and comprehensive advice.

## GRAIN-PROOF

The rear tailgate of the RamBody models opens and closes hydraulically as standard. The rear tailgate cylinders maintain the closing pressure constant due to their integrated locking block valve and load safety valve. The rear tailgate is locked by means of four locking wedges guaranteeing that light goods can be compressed through the push blade.

## FLEXIBLE IN USE

Due to the very steep angle of attack of the mudguards, dirt deposits are avoided.



High-quality materials



Push blade with innovative cable routing and very large inspection window



A lot of different running gear options for maximum engine smoothness and highest driving comfort



Modern production methods





# RAMBODY

TANDEM & TRIDEM  
PUSH-OFF TRAILERS


## MODELS


 **RAMBODY750**

 **RAMBODY900**

 = Carrier series  
 = Customised construction

 **TRANSPORT VOLUME**  
36.3 m<sup>3</sup> - 52.5 m<sup>3</sup>

 **PAYLOAD ACC. TO GERMAN TRAFFIC ROAD REGULATIONS**  
13,700 kg - 20,500 kg

 **TYRE VARIANTS**  
560/60 R 22.5 - 710/50 R 30.5



# YOUR KRAMPE

YOU SHOULD KNOW THAT



## WHAT ARE THE REQUIREMENTS OF THE TOWING VEHICLE ON THE TRAILER?

The correct assignment of tractor and traction power requirement is essential as well as the correct hitch height, drawbar eye and towing device. Please find all important information in the charts on page 21.



## WHICH GOODS ARE MAINLY TRANSPORTED?

Please find an optimum volume in proportion to the payload in the data sheets on page 21.



## WHICH SPEED VARIANTS ARE AVAILABLE?

As standard, our vehicles are equipped with 40 km/h and COC documents. Models are also available on demand with 60 km/h registration.



## WHAT ARE THE FIELDS OF APPLICATION?

We offer vehicle systems for the agricultural and forestry sector, but also for the commercial transport of goods, of course with the corresponding load securing.



## WHICH DRIVING CHARACTERISTICS ARE WANTED? FIELD AND/OR STREET?

As cost-efficient entry and for mainly driving on roads, a running gear with parabolic springs is well-suited. For long, uneven distances and high speeds, the pneumatic suspension offers a lot of advantages, driving safety and particularly driving comfort are increased.





# RUNNING GEAR/STEERING AXLES

DRIVING COMFORT MADE BY KRAMPE

## OUR KNOW-HOW ON FIELDS AND STREETS

Our running gears are not bog-standard components, but have continually been refined by our technicians and designers over many years. Contrary to a lot of competitors, each running gear can be tailored to the planned field of use and offers a driving comfort that is unmatched.

Even if the running gear is to a great extent invisible on the vehicle, this should be the last component to

save money. Not only do good driving characteristics depend on the running gear but it is also one of the most valuable components on the vehicle. Our know-how and continuous further development distinguish our running gears from other brands and offer you a driving comfort in a class of its own.

We offer you a comprehensive range of towing devices, running gears and tyre possibilities.



The 32 ton parabolic springs fitted as standard on the RamBody 750 guarantee a high ground clearance. Available with a wheelbase of 1.55 and 1.81 m.



For the RamBody 900, we use 36 t parabolic springs with trailing arms and dynamic compensation with a wheelbase of 1.55 m.



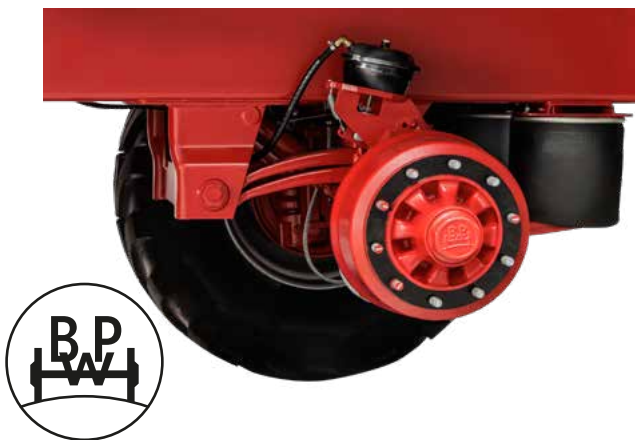
Pneumatic running gears are becoming more and more popular and are partly already offered as standard. The two-bladed pull rods and the large air bellows ensure an excellent engine smoothness and a stable driving behaviour.



Also Krampe supplies hydraulic running gears. The standard protection tubes protect the double chromed piston rods against stone impacts.

## BPW STEERING AXLES WITH OVERHEAD BRAKE CYLINDERS

Like our running gears, the steering axles are also manufactured with special know-how. The overhead brake cylinders for more ground clearance, automatic slack adjusters, a 410 x 180 mm large wheel brake and a 150 mm square axle belong to the Krampe standard. The BPW caster steering axle can easily be outfitted with the forced steering. Of course, our axles are all COC type-approved.



BPW caster steering axles: Design with pressure axle disc for smooth driving behaviour. The steering axle must hydraulically be locked when driving on roads



BPW forced steering: The double-acting master cylinder is situated at the front at the towing device, on the left and right in travelling direction for the Tridem, hydraulic system completely with hand pump, manometers and nitrogen accumulators, coupling points on the tractor according to standard proposition (ISO 26 402)



Our electronic sensorless forced steering enables the trailer to steer actively. This ensures a significantly improved vehicle manoeuvrability.



By means of an ISOBUS control, we have implemented the operation via the terminal of the tractor for forced steering.



# PUSH BLADE

## THE POWER PACK

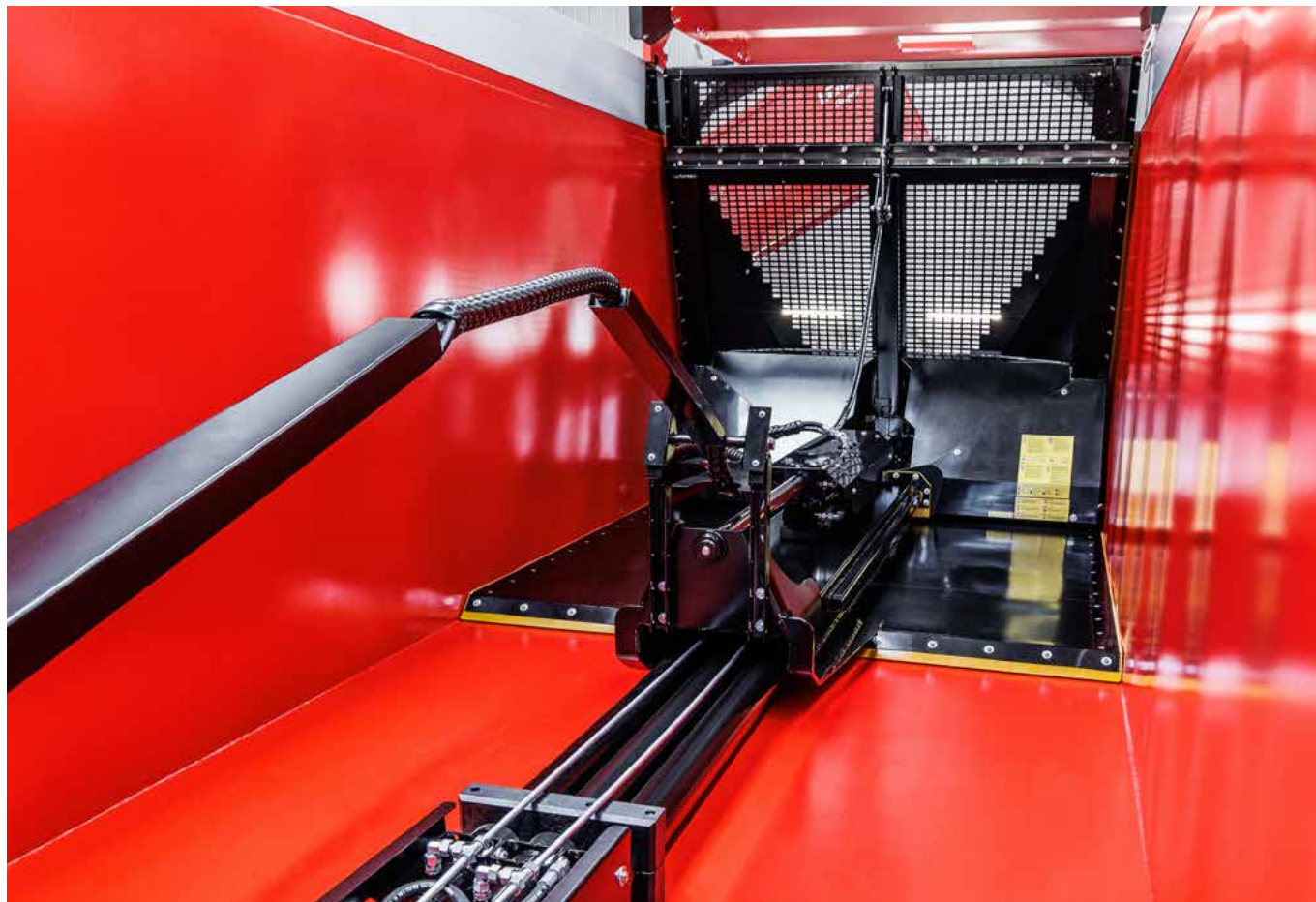


The driver always has a good view on the load due to the extensive lattice look of the push blade.

The core of the push-off trailer is the push blade on the following-on table. The narrow designed tunnel in the middle protects the five double-acting hydraulic cylinders from damages. Integrated plastic slide rails facilitate the shifting mechanism through lower force. The push blade has a full-surface lattice look providing an optimum view in the loading compartment. The upper forty centimeters can be folded down as standard. The hydraulic supply is simply and robustly solved by means of a scissor mechanism. The clear look rounds off the overall appearance.



Adjustable seals lock the push blade on all edges and guarantee a grain-proof push-off trailer construction



During pushing process, five hydraulic cylinders move the push blade evenly to the vehicle rear. In idle state, the push blade is folded at vehicle front, so the body hardly loses any volume.



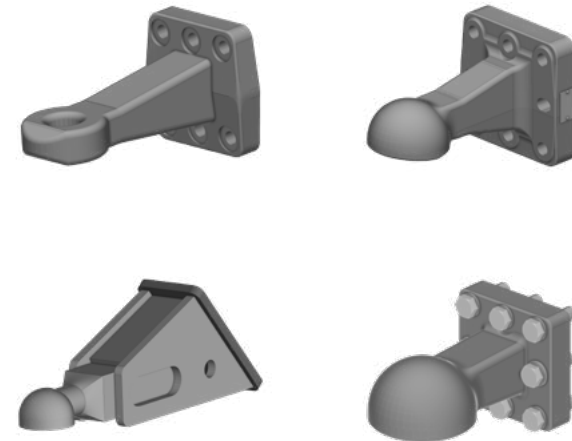
Our RamBody 750 unloads 40 m<sup>3</sup> silage maize in only approx. 45 seconds at 100 l/ minute.



# ACCESSORIES

## RUNNING GEAR

Our diversified range of accessories for running gears provides a comprehensive choice of equipment options. At Krampe, we invite you to discover different innovations in the range of the running gear technology. Our offer is characterised by well thought-out solutions and quality-oriented approaches which are tailored to your requirements and needs.



We offer you all common drawbar eyes for your vehicle. No matter which drawbar eye, in which country you need, we are able to help you here.



The height-adjustable towing device is available with rubber silent blocks or with hydraulic cylinders.



The slim towing device design ensures an especially narrow manoeuvring angle. The hitch height can be adjusted almost continuously on the vehicles with low hitch position.



A hydraulic support foot combined with a 6/2 way valve (support foot <-> rear tailgate) is mounted as standard.



The hose holder ensures order and is adjustable in length and height by a few handles.



Our mechanically foldable underide guard can be folded upwards with just a few handles in order to increase the ground clearance when driving on fields.



The hydraulically foldable underide guard can directly be operated from the driver's cab. The lights are also folded upwards and disappear from the danger area.



EBS system for electronic control of the pneumatic braking system with load-dependent braking (ALB), anti-blocking system (ABS) and Roll Stability Support (RSS), an electronic stability control is integrated in the system as standard. Further functions of the pneumatic suspension can optionally be controlled.



Via OptiLink the control of the EBS system is possible via mobile phone or tablet computer. The app is free of charge and available for iOS and Android.



The RamBody can controlled all functions via ISOBUS. Additional functions such as hydraulic serial function, time for unloading and much more are also possible.



Working lights for safer working can be mounted at vehicle rear or on the body and lighten optimally the working area or the axles.

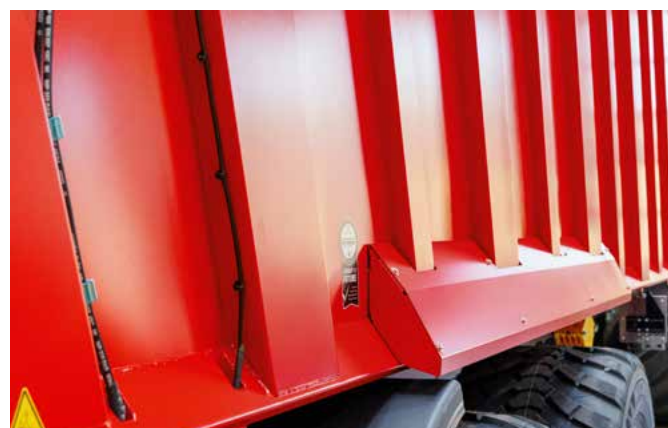


# BODY

AS IF FROM A SINGLE MOULD



Due to the jet design of the RamBody serie, the forces arising during push-off process are optimally distributed over the body. A distortion of the body is herewith excluded. The even profile of the lateral stanchions enables a maximum of body inside width.



Edged external stanchions for more stability. Narrow design for a wider loading compartment.



We install a 200 x 80 mm stable top frame.

# ACCESSORIES

BODY

## REAR TAILGATES



The hydraulic rear tailgate has a discharge outlet as standard.



Lights with 5-chamber rear lights are integrated in the tailgate.



Thanks to the volume rear tailgate, you increase the transport volume by 2.5 m³. A hydraulically foldable underride guard is mounted as standard.



Rear tailgate guide by means of four locking wedges. Adjustable and therefore grain-proof also after a lot of years of use.

## EXTENSIONS



In order to further increase the volume, 30 cm aluminium silage extensions are available as option.



An inclined slant is installed on the extension as standard. This means that there is no surface for silage deposits and no need of time-consuming cleaning for road travel.



# LOAD SECURING

## TARPAULINS AND COVERING SYSTEMS

### SAFELY TRANSPORTED FROM THE FIELD TO THE FARM

Load securing for agricultural trailers is essential to warrant not only the safety on the roads but also the intactness of the load. All covering systems fulfil §22 of the German Road Traffic Regulations and guarantee a safe transport. Our RamBody range disposes of a large range of covering and securing systems.



The two-sided hydraulic Krampe TwinTop cover opens and closes within only approx. 15 seconds and can easily be actuated from the driver's cab.



The laterally pivoting alu brackets open and close the net covering.



The Fliptop covering system opens and closes hydraulically to both vehicle sides.

# TECHNICAL DATA

## AND DETAILS



TECHNICAL DATA	TANDEM		TRIDEM	
	RAMBODY750	RAMBODY750+	RAMBODY900	RAMBODY900+
Perm. GVWR <sup>*1</sup>	22 t (24 t <sup>*3</sup> ) / 40 km/h	22 t (24 t <sup>*3</sup> ) / 40 km/h	31 t (34 t <sup>*3</sup> ) / 40 km/h	31 t (34 t <sup>*3</sup> ) / 40 km/h
Payload acc. to German traffic road regulations <sup>*1</sup>	approx. 13.7 t	approx. 13.7 t	approx. 20.5 t	approx. 20.5 t
Technical payload	approx. 22.0 t	approx. 22.0 t	approx. 28.0 t	approx. 28.0 t
Empty weight <sup>*1</sup>	approx. 8.3 t	approx. 8.4 t	approx. 10.5 t	approx. 10.6 t
Permissible tongue load (max)	4.0 t	4.0 t	4.0 t	4.0 t
Suspended drawbar	series	series	series	series
Towing height	55 / 70 cm	55 / 70 cm	55 / 70 cm	55 / 70 cm
Traction power requirement from	132 kW (180 HP)	132 kW (180 HP)	147 kW (200 HP)	147 kW (200 HP)
Oil requirement of pushing unit	38 l	38 l	47 l	47 l
Wheel bearings, rated for, at 40 km/h <sup>*2</sup>	each 10 t / 13 t	each 10 t / 13 t	each 13 t	each 13 t
Axle cross section	120 mm (150 mm) / 10 hole	120 mm (150 mm) / 10 hole	150 mm / 10 hole	150 mm / 10 hole
Track width	1.95 m (2.15 m)	1.95 m (2.15 m)	2.15 m	2.15 m
Max. permissible tyre diameter	1,500 mm	1,500 mm	1,500 mm	1,500 mm
Suspension	32 t	32 t	36 t	36 t
Time for unloading of m <sup>3</sup> silage maize	approx. 45 Sec. at 100 l / Minute at 40 m <sup>3</sup>	approx. 45 Sec. at 100 l / Minute at 44.5 m <sup>3</sup>	approx. 56 Sec. at 100 l / Minute at 50 m <sup>3</sup>	approx. 56 Sec. at 100 l / Minute at 53 m <sup>3</sup>
Max. unloading capacity	approx. 24.0 t (highly load dependent)	approx. 24.0 t (highly load dependent)	approx. 30.0 t (highly load dependent)	approx. 30.0 t (highly load dependent)
DIMENSIONS IN M	RAMBODY750		RAMBODY900	
	RAMBODY750	RAMBODY750+	RAMBODY900	RAMBODY900+
Body inside dimensions	7.63 x 2.37 x 2.00 m	8.14 x 2.37 x 2.00 m	9.05 x 2.37 x 2.00 m	9.56 x 2.37 x 2.00 m
Transport volume without extensions	36.3 m <sup>3</sup>	38.6 m <sup>3</sup>	43.0 m <sup>3</sup>	45.3 m <sup>3</sup>
Transport volume with 30 cm extensions	42.1 m <sup>3</sup>	44.5 m <sup>3</sup>	50.0 m <sup>3</sup>	52.5 m <sup>3</sup>
Platform height, unloaded (p) with tyres <sup>*2</sup>	1.65 m 600 / 55 R26.5	1.65 m 600 / 55 R26.5	1.65 m 600 / 55 R26.5	1.65 m 600 / 55 R26.5
Overall length (g)	10.19 m	10.62 m	11.57 m	12.00 m
Overall height without extensions (f)	3.6 - 3.7 m	3.6 - 3.7 m	3.6 - 3.7 m	3.6 - 3.7 m
Overall height with 30 cm extensions (h)	3.9 - 4.0 m	3.9 - 4.0 m	3.9 - 4.0 m	3.9 - 4.0 m
Dimension middle drawbar eye / middle rear trailer coupling (m)	10.13 m	10.54 m	11.51 m	11.94 m
Underneath chassis tubes (b)	min. 1.0 m	min. 1.0 m	min. 1.0 m	min. 1.0 m
Wheelbase (a)	1.55 m (1.81 m) <sup>*3</sup>	1.55 m (1.81 m) <sup>*3</sup>	1.55 m (1.81 m) <sup>*3</sup>	1.55 m (1.81 m) <sup>*3</sup>

<sup>\*1</sup> Empty weight and payload depend on equipment. The empty weight is indicated with the listed reference tyres.

<sup>\*2</sup> We use 10-hole axles from BPW. All axles are equipped with automatic slack adjusters (ASA).

<sup>\*3</sup> Option, depending on equipment

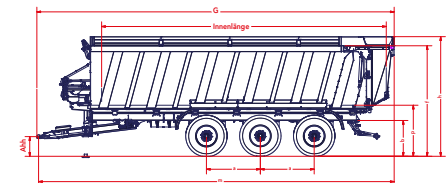
☑ Carrier series

☑ Customized construction

RamBody 750+ and RamBody 900+ with volume tailgate as standard.

For export vehicles, higher payloads are partly permissible in case of national registration.

Technical data without engagement. Construction subject to changes.





# TYRES

WE WOULD BE PLEASED TO ADVISE YOU

DIMENSION	HEIGHT (MM)	MAX. WIDTH (MM)	LOAD INDEX
385/55 R 22.5	1,001	380	160 J
385/65 R 22.5	1,060	390	160 F
425/65 R 22.5	1,122	425	165 F
445/65 R 22.5	1,150	450	168 K
525/65 R 20.5	1,200	521	173 F
24 R 20.5	1,378	604	176 F
500/60 R 22.5	1,180	513	155 D
560/45 R 22.5	1,080	545	152 D
560/60 R 22.5	1,251	570	161 D
580/65 R 22.5	1,300	586	166 D
600/50 R 22.5	1,181	616	159 D
600/55 R 22.5	1,245	600	162 E
650/50 R 22.5	1,235	650	163 E
600/55 R 26.5	1,348	626	165 D
620/55 R 26.5	1,340	620	166 D
650/55 R 26.5	1,360	645	167 E
710/50 R 26.5	1,390	730	170 E
750/45 R 26.5	1,350	750	170 E
800/45 R 26.5	1,395	815	174 D
600/60 R 30.5	1,496	639	169 D
710/50 R 30.5	1,495	727	167D

Tyre manufacturer dimensions may differ

In the overview, you may gather further information about tyre dimensions and tread forms of the leading manufacturers. Since not all requirements e.g. for off-road tyres on one hand and roadworthiness on the other hand cannot be put on the same rim, we have listed all usual wheels. We would be pleased to advise you in details on the choice of the optimum tyres for the desired application in combination with the technical possibilities of the vehicle.

Truck road tread



Vredestein Flotation Pro



Vredestein Flotation Trac



Nokian CT BAS



Nokian Country King



Alliance Tread 380



Alliance Tread 390



BKT FL 630



BKT FL 693



Aeolus AE 74



Aeolus AE 77



Michelin Tread XS



Michelin Trail X-BIB



## GERMANY



**HELMUT HOVELMANN**  
CSO

+49 (0) 25 41/80 178-25  
+49 (0) 171/69 35 221  
hovelmann@krampe.de



**MATTHIAS VORDING**  
AREA SALES MANAGER  
MIDDLE/NORTH GERMANY

+49 (0) 25 41/80 178-37  
+49 (0) 171/49 48 720  
voering@krampe.de



**EGBERT LORENZ**  
AREA SALES MANAGER  
EAST GERMANY

+49 (0) 171/56 09 113  
lorenz@krampe.de



**KARL VOEGERL**  
AREA SALES MANAGER  
SOUTH GERMANY

+49 (0) 171/81 96 420  
voegerl@krampe.de



**MALTE CLEVER**  
AREA SALES MANAGER  
SOUTHWEST GERMANY

+49 (0) 151/64 01 08 46  
clever@krampe.de



**MARKUS HÜTTEMANN**  
SALES PROMOTION

+49 (0) 25 41/80 178-27  
+49 (0) 175/40 60 454  
huettemann@krampe.de

## EXPORT



**FRANK MEIBES**  
HEAD OF EXPORT SALES  
AND MARKETING

+49 (0) 25 41/80 178-18  
+49 (0) 151/17 28 70 23  
meibes@krampe.de



**KENNETH BRØNNER**  
AREA SALES MANAGER  
SCANDINAVIA

+49 (0) 151/16 89 08 54  
brønner@krampe.de



**PETR POLEHLA**  
AREA SALES MANAGER  
EASTERN EUROPE

+49 (0) 170/24 75 382  
polehla@krampe.de



**PASCAL CHONT**  
RESPONSABLE  
COMMERCIA FRANCE

+33 (0) 7 87/16 93 85  
chont@krampe.fr



**MARIUSZ SZCZESIAK**  
AREA SALES MANAGER  
POLAND/BALTIC STATES

+48 (0) 603/22 06 04  
szczesiak@krampe.de

## INTERNAL SALES



**THERESIA SCHULZE TEMMING**  
SALES SUPPORT

+49 (0) 25 41/80 178-486  
vertrieb@krampe.de



**JULIA TWYHUES**  
SALES SUPPORT

+49 (0) 25 41/80 178-67  
vertrieb@krampe.de





...always one step ahead!

## KRAMPE FAHRZEUGBAU GMBH

Zusestraße 4, D-48653 Coesfeld, [www.krampetrailer.com](http://www.krampetrailer.com)



think of the environment –  
download our brochures